

MARINE TECH
ROBOTICS

Dolphin



RSV Dolphin

CHARACTERISTICS

- **Size (Length x Width x Height) :** 2.0 x 1.2 x 1.2m
- **Weight :** 90 kg
- **Draft :** 0.4m
- **Payload :** 20 kg
- **Engine :** 2x1 kw (electric)
- **Control :** remote and autopilot
- **Endurance :** 4 hours
- **Speed :** 0-6 knots
- **Sea state :** up to 2



SENSORS

Megaphone
HD Camera
Infrared Camera
ADCP, profiler

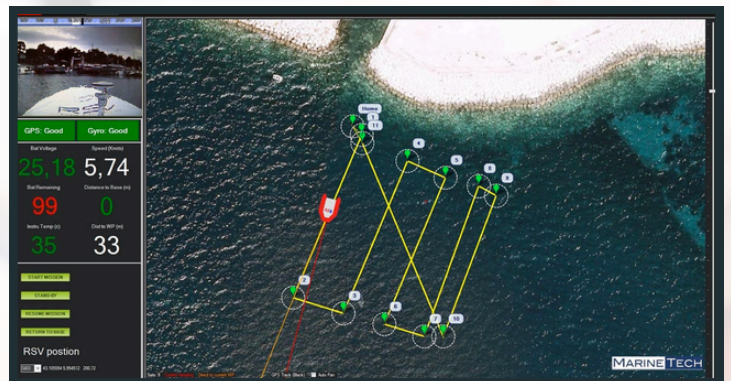
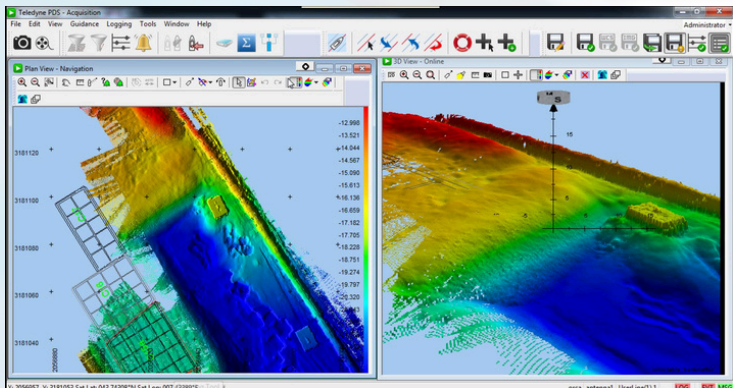
Single Beam Echosounder
Multibeam Echosounder
Lidar Scan Laser

Communication :

- 4G/5G
- WIFI
- UHF

APPLICATIONS

Bathymetry
Surveillance



MARINE TECH

ROBOTICS

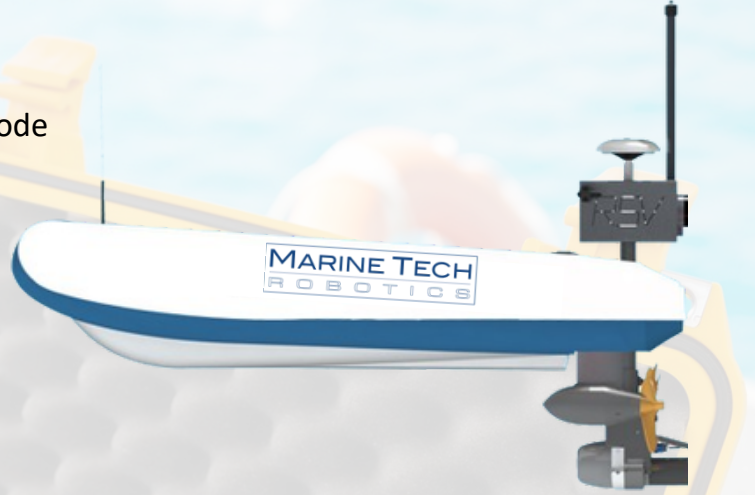
Orca



RSV Orca

CHARACTERISTICS

- **Size (Length x Width x Height)** : 3.2 x 1.7 x 1.2m
- **Weight** : 220 kg
- **Draft** : 0.4m
- **Payload** : 150 kg
- **Engine** : 2x3 kw (electric)
- **Control** : manual, autopilot or supervised mode
- **Endurance** : 24 hours
- **Speed** : 0-17 knots
- **Sea state** : up to 3



SENSORS

Single Beam Echosounder
Multibeam Echosounder
Sub Bottom Profiler
Side Scan Sonar/ADCP
RTK

Gyrocompass/Motion-Sensor
HD/IR Camera and video
Lidar
Gyrocompass/Motion-Sensor
Multi-parameters probe



Multi-Beam
Echosounder



Sub Bottom
Profiler



Infrared Camera

APPLICATIONS

Subsea monitoring/Inspection
Seabed mapping
Surveillance and security
Current profiler

